



Dial Analyzers

Hand Tool Torque Analyzers

KEY FEATURES

Accuracy $\pm 2\%$ of reading from 20% to 100% of full scale.

Easy to read dual scale.

Memory style master pointer retains maximum readings.

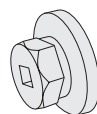
Designed for all types of hand torque wrenches and screwdrivers.

Bench mount style.

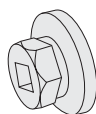
DM Model: Bi-directional, and fitted with 1/4" male hex drive.

TCA Models: CW direction only.

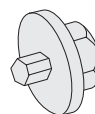
Drive Adapters supplied with TCA Models



1/4" F/Sq.



3/8" F/Sq.



1/4" M/Hex

	1/4" F/Sq.	3/8" F/Sq.	1/4" M/Hex
TCA50 / 35	Yes	No	Yes
TCA100 / 70	Yes	No	Yes
TCA180 / 120	Yes	No	Yes
TCA36 / 4	Yes	No	Yes
TCA120 / 12	Yes	Yes	No
TCA240 / 26	Yes	Yes	No

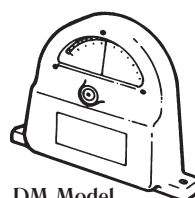
Model	Item #	Torque Ranges	
		American	S.I.
DM10 / 7	020091	0 - 10 ozf.in	0 - 7 cN.m
TCA50 / 35	020088	10 - 50 ozf.in	7 - 35 cN.m
TCA100 / 70	020089	20 - 100 ozf.in	14 - 70 cN.m
TCA180 / 120	020092	36 - 180 ozf.in	26 - 130 cN.m
TCA36 / 4	020087	7.2 - 36 lbf.in	0.8 - 4 N.m
TCA120 / 12	020090	24 - 120 lbf.in	2.4 - 12 N.m
TCA240 / 26	020086	48 - 240 lbf.in	5.4 - 27 N.m

Model	Graduation			Weight	
	American	S.I.	Pointer	lbs.	kg.
DM10 / 7	1 ozf.in	0.5 cN.m	Single	3.0	1.35
TCA50 / 35	0.5 ozf.in	0.5 cN.m	Memory	4.3	1.9
TCA100 / 70	1 ozf.in	1 cN.m	Memory	4.3	1.9
TCA180 / 120	2 ozf.in	2 cN.m	Memory	4.3	1.9
TCA36 / 4	0.5 lbf.in	0.05 N.m	Memory	4.3	1.9
TCA120 / 12	2 lbf.in	0.2 N.m	Memory	4.3	1.9
TCA240 / 26	5 lbf.in	0.5 N.m	Memory	4.5	2.1

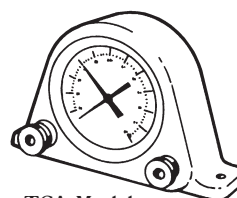


CERTIFIED

Supplied with NIST-Traceable Certification of Calibration



DM Model
7.25" (184) Height
10" (254) Width
2.3" (59) Depth



TCA Models
6" (152) Height
10" (254) Width
3.56" (90) Depth

NOTE!

Counter Clockwise Adapter (TCA models) **Item #020330**

To test electric and/or pneumatic tools, see pages 01.3 - 01.6

DM model fitted with 1/4" male hex drive.